

Welcome to the Bedfont Scientific Calibration Unlock Tool quick start guide.
Here you will learn how to locate, install and operate the Calibration Unlock Tool.

First you will need to locate the software link (Calibration Unlock Tool (Micro+, PiCO+, Gastro+ & ToxCO)) on the Tech Support page.

www.bedfont.com

Click the link to begin the download.

ask@bedfont.com

home products consumables distributors news + events about us contact us download centre

Tech Support

Product & Technical Support

Software & Tools

- [Remote Helpdesk Support Tool](#)
- [Bedsoft V2.0 Update Tool \(GastroCHART-v2.00.48 - COdata+-v2.00.39\)](#)
- [Calibration Unlock Tool \(Micro+, PiCO+, Gastro+ & ToxCO\)](#)

Interactive Downloads (the videos may take a few minutes to download)

- [piCO+ Training Video \(Windows\)](#)
- [piCO+ Training Video \(Flash\)](#)
- [NiCOdep® Test](#)
- [Fagerström Test](#)

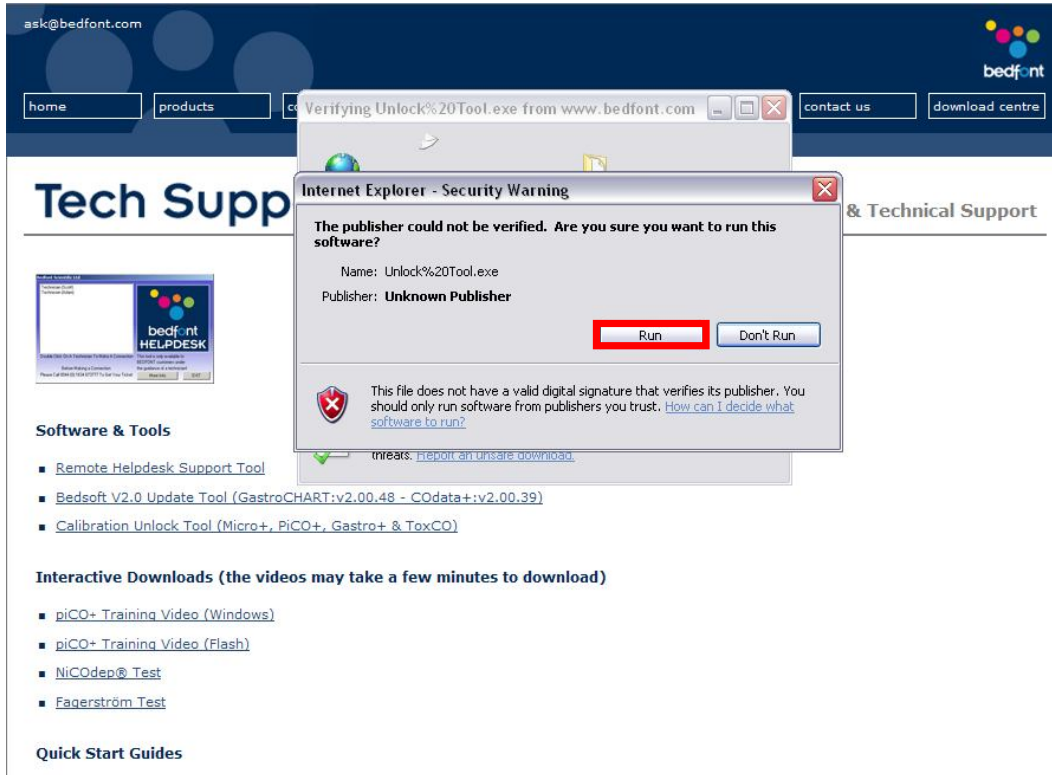
Quick Start Guides

You will be presented with two options, 'run' or 'save'.
Click 'run' to download and start the installation or 'save' to download and start the installation at a later date.

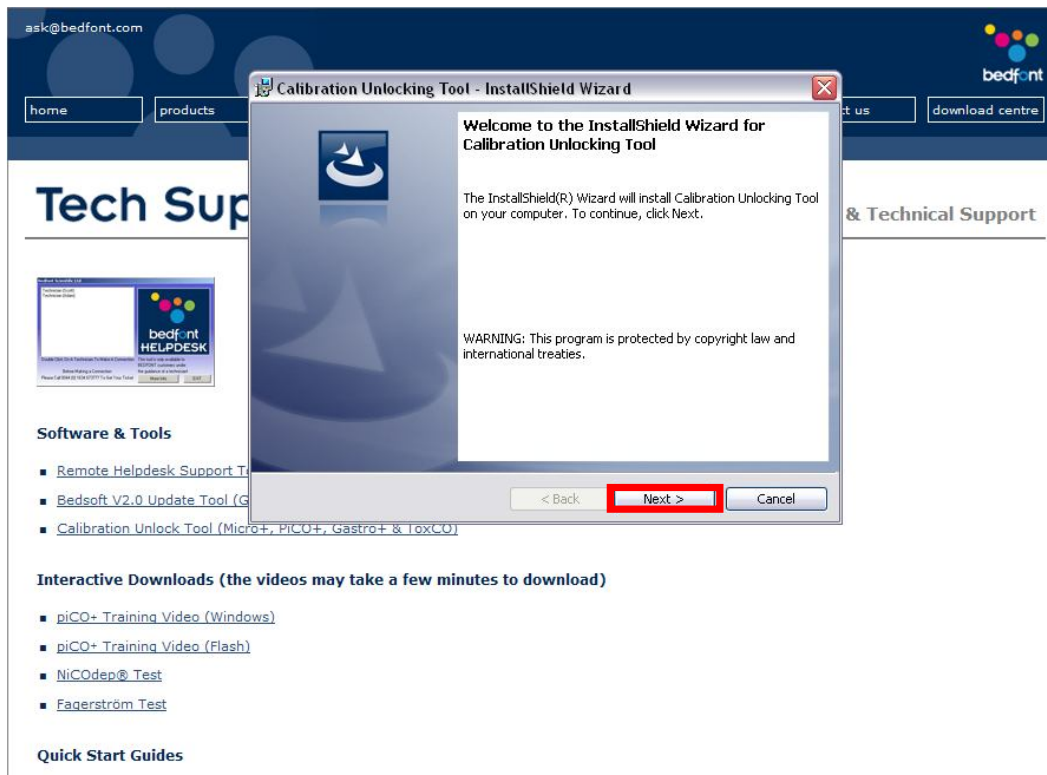
(I have chosen 'run')



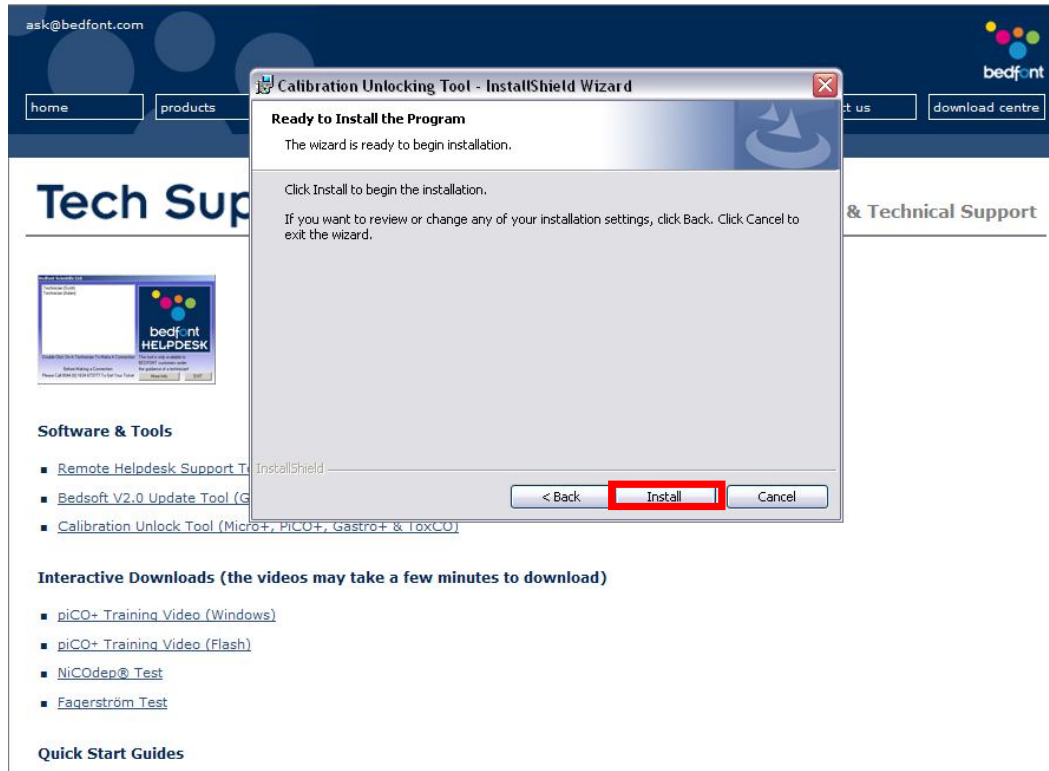
You will then be presented with a security warning, click 'run' to confirm you wish to continue with the installation.



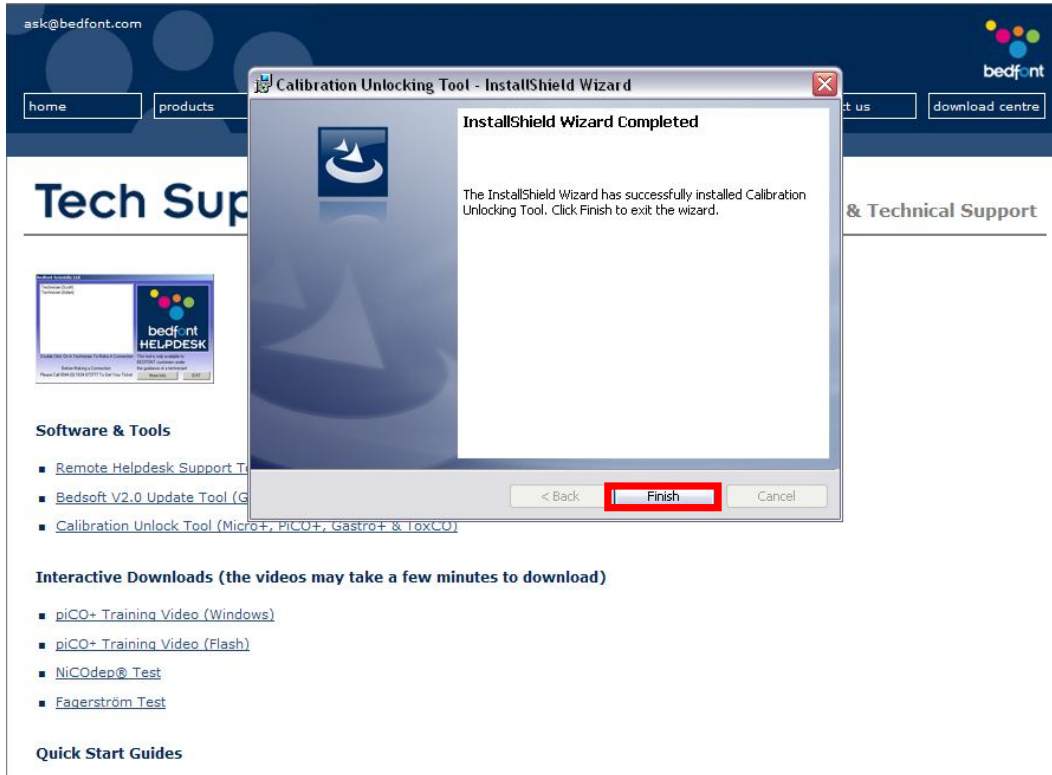
You have now begun the installation wizard, click 'next' to continue with the installation.



Now click 'Install' to start installing the software.



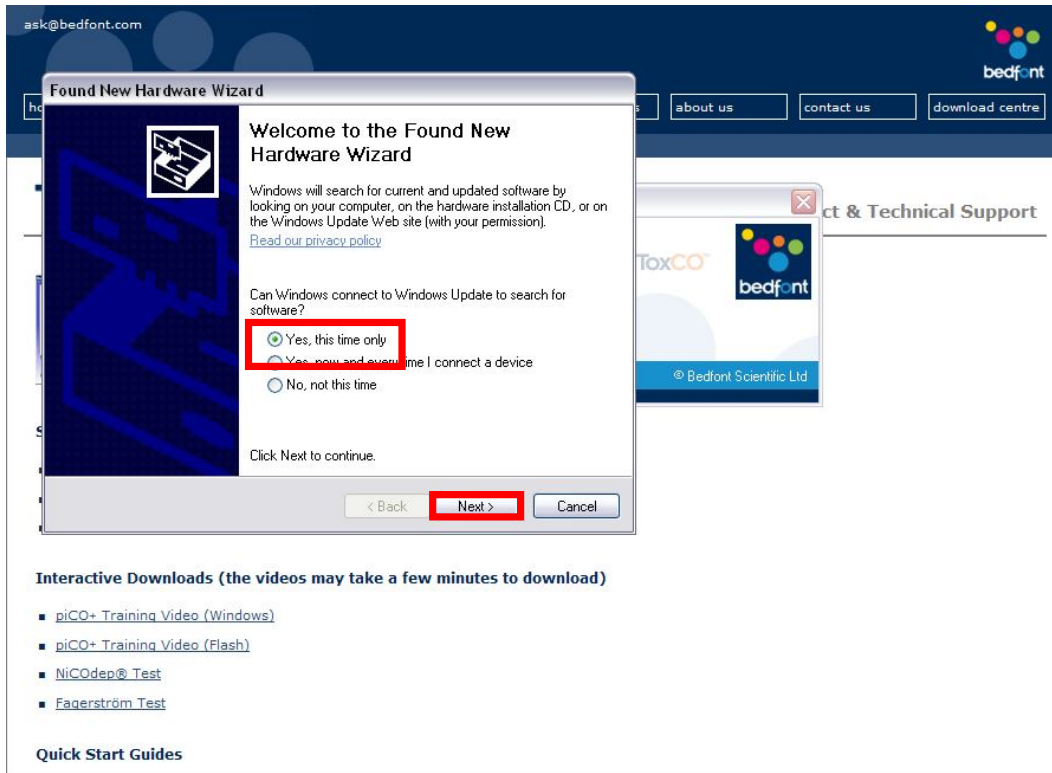
You have now successfully installed the software, click 'finish' to exit the installation wizard.



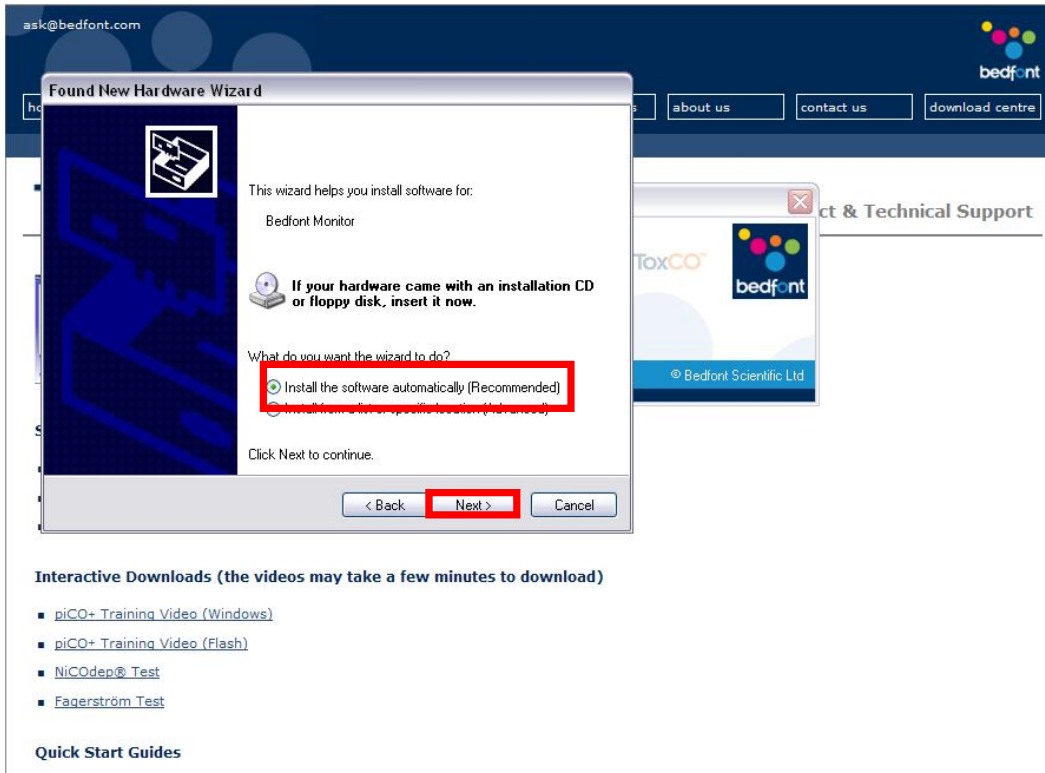
You will need to plug your device into the computer using the mini USB lead and turn it on to install the driver.



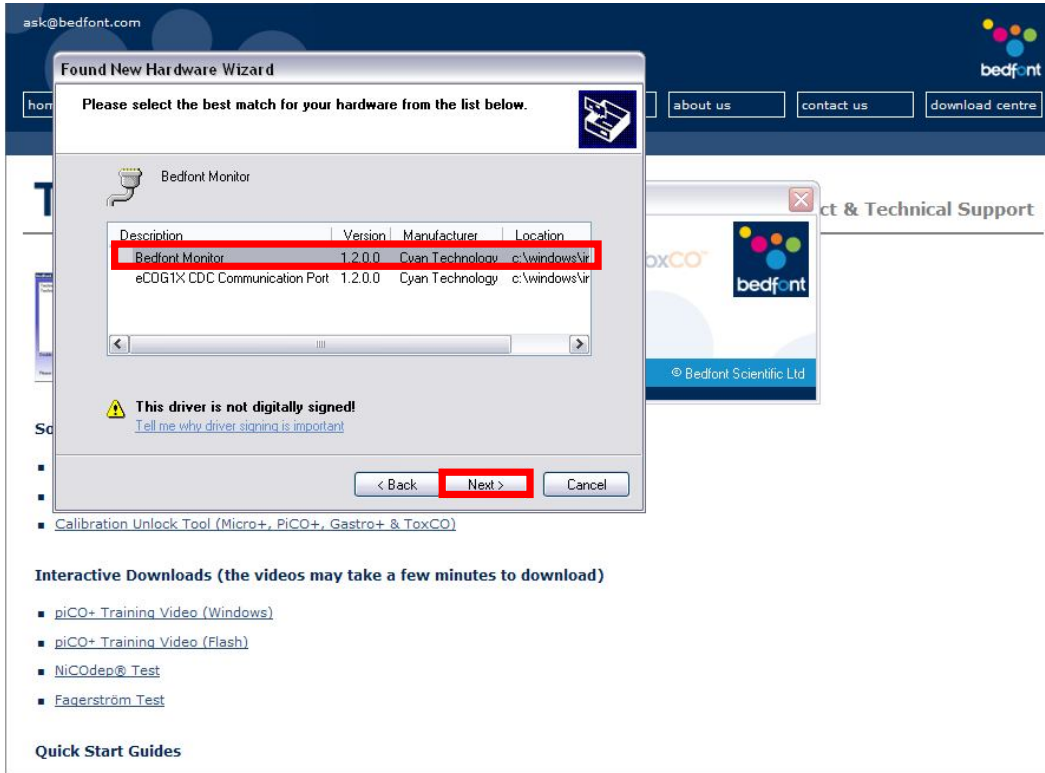
Your computer should automatically detect your device and open the new hardware wizard select 'yes, this time only' and click 'next' to continue with the setup.



Select 'Install the software automatically' and windows will search for the correct driver for your device.

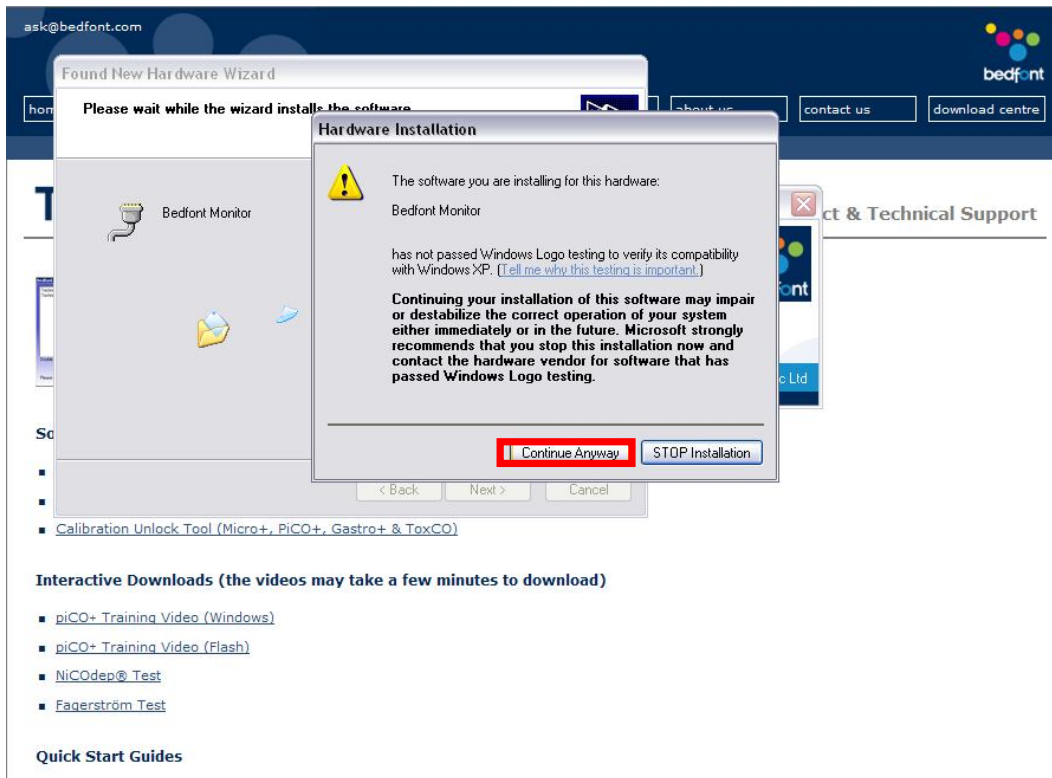


If you are presented with the following window, select 'Bedfont Monitor' to install the correct device.

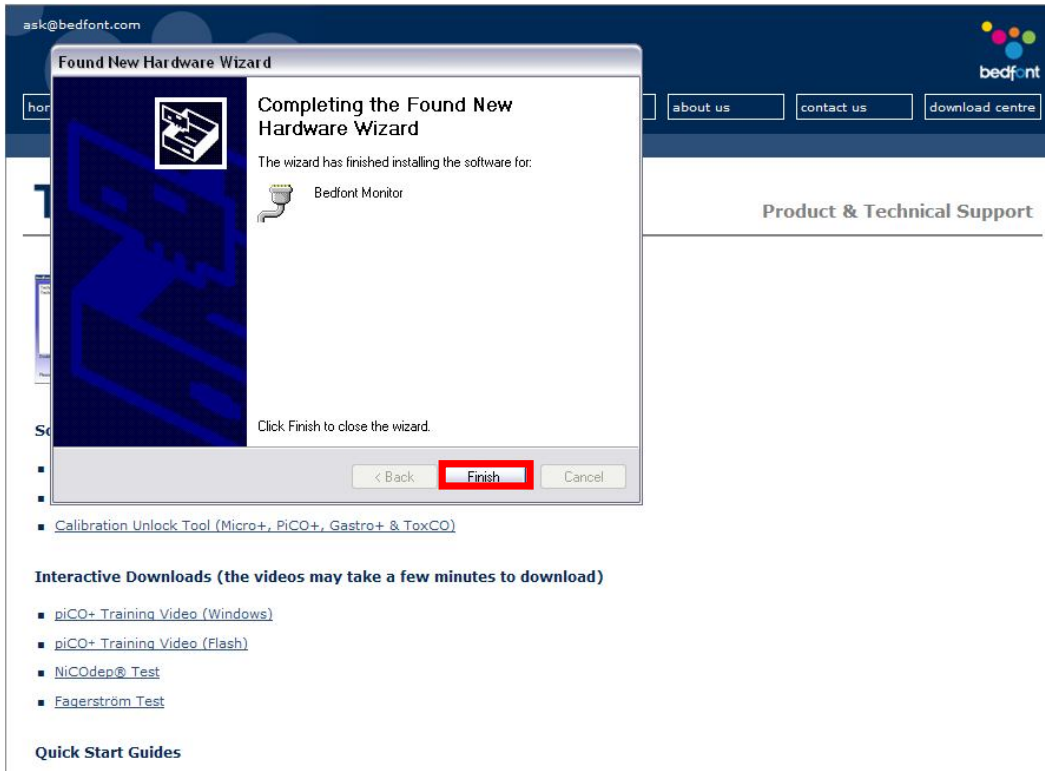


As the driver for your device is not digitally signed by windows you will be presented with this message.

Click 'Continue Anyway' to continue installing the driver.



You have now successfully installed the driver for your device, click 'finish' to exit the new hardware wizard.



To run the software you will have an icon on your desktop which looks like the one below, double click it to run the software.



As you can see you have three options; Smokerlyzer, Gastrolyzer and ToxCO. Click the applicable option (depending on your device) and it will stay highlighted.

As you can see I have chosen Gastrolyzer.

NOTE: You may need to turn your device off, disconnect it, reconnect it and turn it back on for the software to register it as connected. See below the 'Unlock Device' option to check if your device is connected.

ask@bedfont.com

home products consumables distributors news + events about us contact us download centre

Tech Support Product & Technical Support

Calibration Unlocking Tool

Which device would you like to unlock...

Smokerlyzer[®] **Gastrolyzer** ToxCO[®]

Unlock Device

Version 0.11

Device Connected

Developed By BioMedical Computing Ltd © Bedfont Scientific Ltd

Software & Tools

- Remote Helpdesk Support Tool
- Bedsoft V2.0 Update Tool (GastroCHART:v2.00.48 - COdata+:v2.00.39)
- Calibration Unlock Tool (Micro+, PiCO+, Gastro+ & ToxCO)

Interactive Downloads (the videos may take a few minutes to download)

- piCO+ Training Video (Windows)
- piCO+ Training Video (Flash)
- NiCOdep® Test
- Fagerström Test

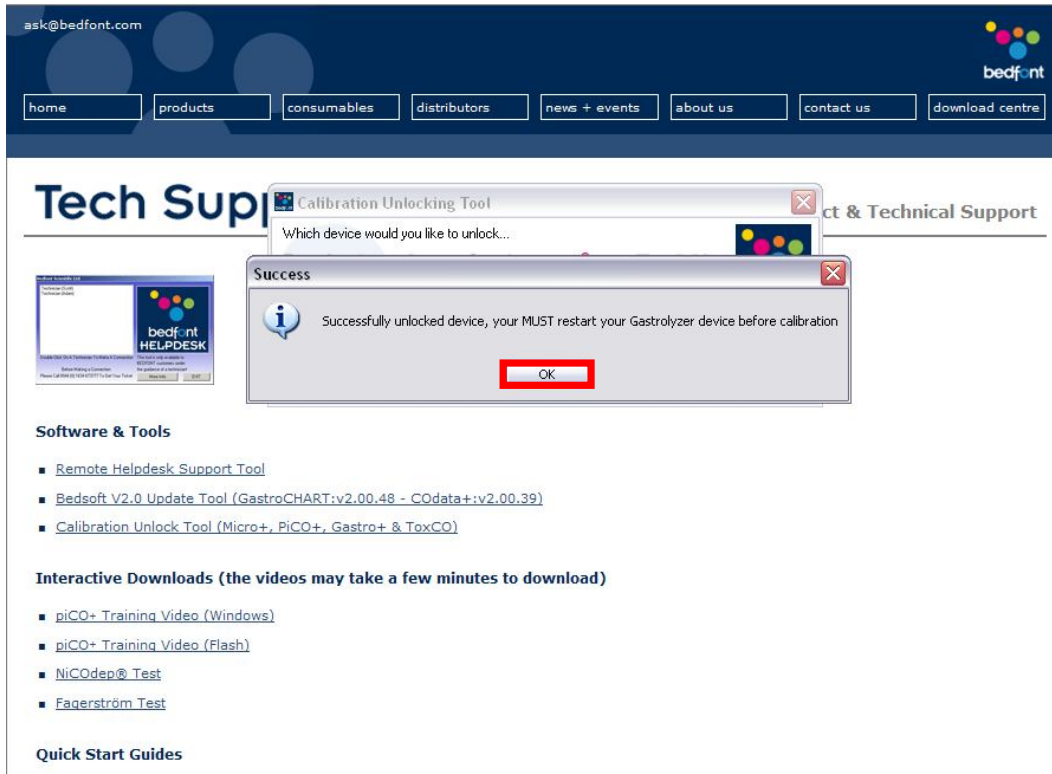
Quick Start Guides

Simply click 'Unlock Device' to unlock the calibration mode on your device.

The screenshot displays the Bedfont website's 'Tech Support' section. At the top, there is a navigation menu with links for 'home', 'products', 'consumables', 'distributors', 'news + events', 'about us', 'contact us', and 'download centre'. The main content area features a 'Tech Support' header and a 'Contact & Technical Support' link. A central window titled 'Calibration Unlocking Tool' is open, showing a selection screen for devices: 'Smokerlyzer', 'Gastrolyzer', and 'ToxCO'. The 'Unlock Device' button is highlighted with a red box. Below the window, there is a list of 'Software & Tools' including 'Remote Helpdesk Support Tool', 'Bedsoft V2.0 Update Tool', and 'Calibration Unlock Tool'. Under 'Interactive Downloads (the videos may take a few minutes to download)', there are links for 'piCO+ Training Video (Windows)', 'piCO+ Training Video (Flash)', 'NiCOdep® Test', and 'Fagerström Test'. A 'Quick Start Guides' section is also present.

You have successfully unlocked the calibration mode on your device, click 'OK' to close the information box.

Now turn your device off and when you turn it back on you will be able to calibrate your device.



Once you have installed the software and drivers you will no longer need to run these wizards, you can simply plug your device in and run the software to unlock your device.

Thank you for using the Bedfont Scientific Calibration Unlock Tool service!